

Multi-Facility Processing

for Microsoft Dynamics™ GP

Enterprise Series



“Having all our entities in a **single database** has helped us significantly **reduce the time it takes for data entry and intercompany reconciliations**”

~ Steven M. Levy
Kamber Management Company LLC





Multi-Facility Processing

for Microsoft Dynamics GP enables

and empowers you to get the most out of your enterprise resource systems by streamlining multiple databases into one.

Multi-Facility Processing was developed for organizations with multiple locations/sites/facilities to manage and consolidate their operations in a single database. Instead of creating multiple companies in Microsoft Dynamics GP for each entity, Multi-Facility Processing allows multiple companies or locations to share Items, Vendors, Customers, and GL accounts all in one single company database to create a fully integrated multi-entity solution. This environment allows you to efficiently process centralized and decentralized AP and AR transactions, while providing a comprehensive data filtering system to ensure data security and integrity. This newly created environment streamlines all multi-entity transaction processing, minimizes database related costs and enables a proactive account management approach by simply centralizing and consolidating multiple databases into a single database.

Multi-Facility Processing is a horizontal solution where customers range from long-term care facilities to large corporations of various structures. From large multi-divisional organizations to several separate legal entities held under a parent holding company, Multi-Facility Processing is a flexible solution that potentially serves any company holding multiple databases. It is an ideal solution for Microsoft Dynamics GP organizations that want to minimize the number of databases they maintain and streamline their existing multi-entity workflows.

Multi-Facility Processing – Core Module

The Core Module of Multi-Facility Processing is the mandatory module of this solution. It encompasses functionality that sits over general ledger, receivables management, payables management, and bank reconciliation.

Multi-Facility Processing allows clients to consolidate many Microsoft Dynamics GP databases into one consolidated database so that they can share critical master files.

Multi-Facility Processing can also combine different legal entities into one database assuming they fit with accepted Microsoft Dynamics GP database criteria.

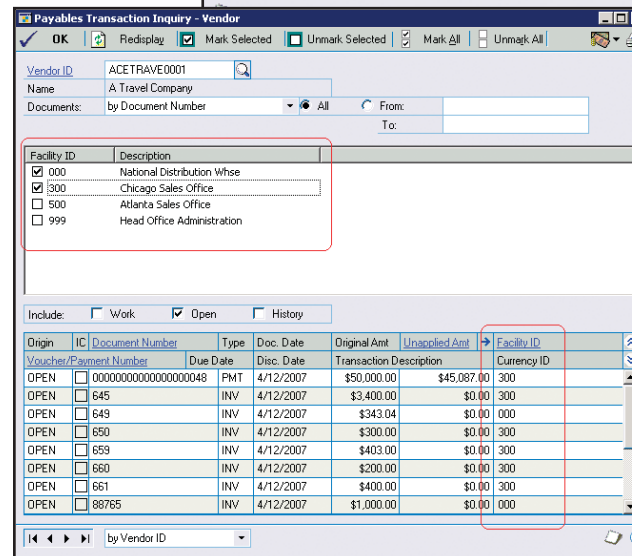
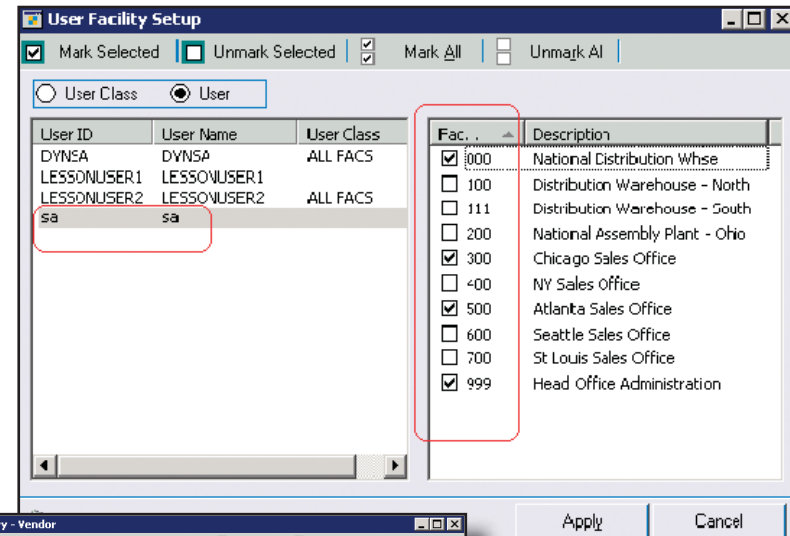
Key Features

- Share Vendors, Customers, Items and GL Accounts across multiple locations/ sites/ facilities in one Microsoft Dynamics GP database
- Full intercompany transaction functionality
- Full 1099 support and reporting by facility
- Restrict user access to assigned sites
- Centralized Payables – Pay bills on behalf of many or all facilities by a parent facility
- Preset allocation templates allow for quick apportionment of AP invoices to multiple facilities
- Flexibly close facilities at different times for period ends
- Run Bank Deposits, Print W3's and Create W2's for magnetic media by facility

Multi-Facility Core requires that all relevant Microsoft Dynamics GP financial modules be previously installed.

Security

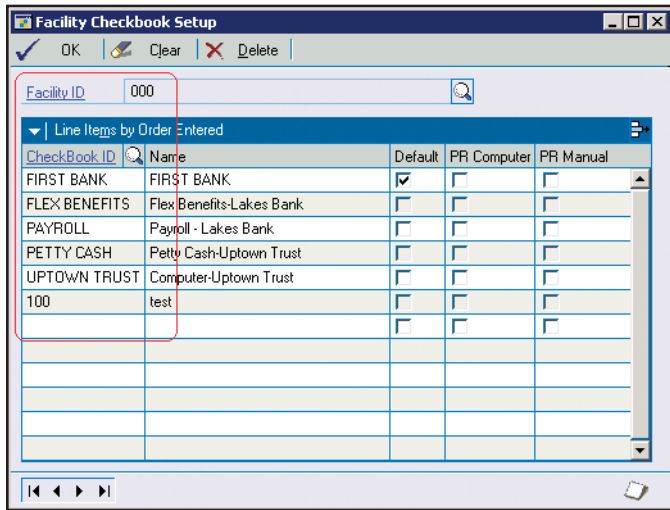
Users have access to one, many or all facilities within the consolidated database.



Transaction Visibility

Users can only see – and post – transactions that they have security access to that is set by facility.

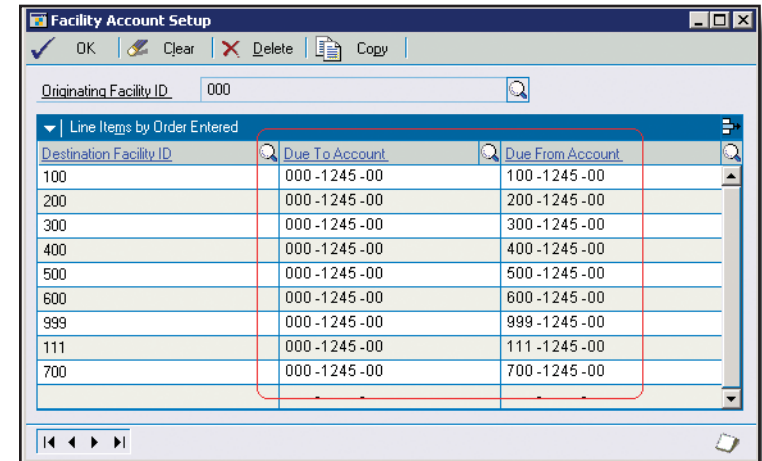
Multi-Facility Processing - Core Module



Checkbook IDs

Checkbooks can be associated to one, many or all facilities.

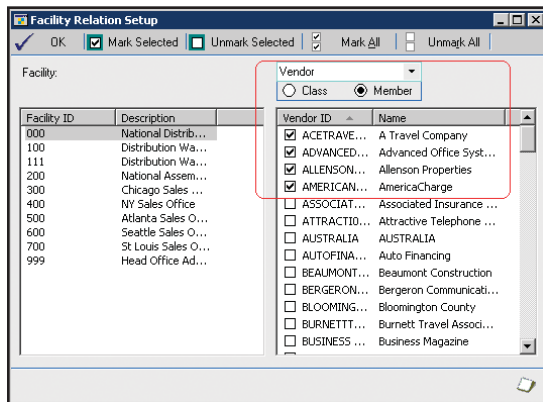
This allows for common checkbooks across multiple facilities or single checkbooks only applying to one facility.



Intercompany Transactions

A complete intercompany transaction engine is embedded within the product at no extra cost.

No need for extra third party intercompany products within the consolidated database.



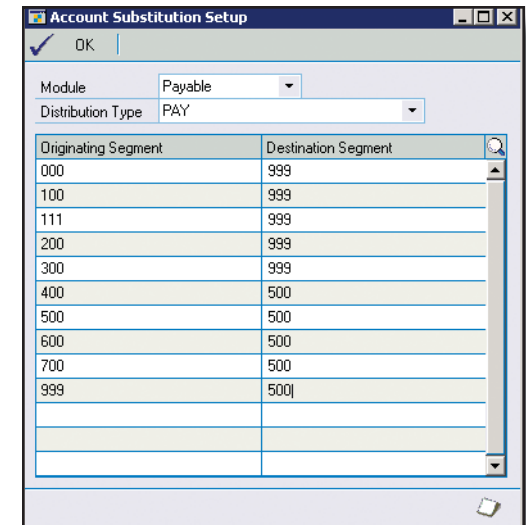
Master File Filtering

Users can access the masters or portions of the entire masters as needed.

Account Substitution

Multi-Facility Processing can fix the GL code to specific facilities which is ideal for more centralized AP configurations.

Account Substitution eliminates coding errors in Microsoft Dynamics GP.



Sales Order Processing Module

Sales order processing in multi-entity companies can offer a myriad of complex issues. Many organizations require the security to ensure that other entities cannot create revenue documents on their behalf – others want the flexibility to create revenue documents from other locations and have visibility to those transactions.

Multi-Facility Processing for Sales Order Processing (SOP) allows organizations to filter what sales documents users can see and what they can enter. Sales document types can be associated to one facility. This makes unique documents from facilities giving these facilities their own auto-numbering sequences.

Key Features

- Filter sales orders / invoices by facility
- Account substitution codes all SOP transactions to the proper facility eliminating coding errors that are prevalent in multi-entity environments
- SOP document types (quotes, orders, Invoices, etc) allows you to allocate different document ID types to specific facilities
- Auto-numbering of SOP document types by facility
- Checkbook and credit card payments are “facilitized” to the proper facility accounts
- SOP Intercompany distributions by facility

Multi-Facility for SOP requires that the Microsoft Dynamics GP SOP module be previously installed.

Filter Sales Orders by Facility

Users can see only the sales orders / sales documents that apply to their individual facilities.

Sales document transactions are coded to the proper facilities with Multi-Facility Processing.

Item Number	D	U of M	Qty Ordered	Unit Price	Extended Price
128 SDRAM		Each	1	\$135.00	\$135.00
			0.00	\$0.00	

Sales Order Document Types

Individual sales documents by facility helps keep better control of source documents in a Multi-Facility environment.

Type ID	Access	Default
FULORD	<input type="checkbox"/>	<input type="checkbox"/>
INV000	<input checked="" type="checkbox"/>	<input checked="" type="checkbox"/>
INV300	<input type="checkbox"/>	<input type="checkbox"/>
POSINV	<input type="checkbox"/>	<input type="checkbox"/>
SERVINV	<input type="checkbox"/>	<input type="checkbox"/>
SPECINV	<input checked="" type="checkbox"/>	<input type="checkbox"/>
STDINV	<input checked="" type="checkbox"/>	<input type="checkbox"/>

Fixed Assets Module

Asset Visibility

Fixed Assets are associated with one facility. Only users that have access to a facility can see its assets.

Asset General Information

Save Clear Redisplay

Asset ID: 00001 1 Status: Active

Description: Office Desk - George

Extended Description:

Short Name: DESK

Master Asset ID: 00001-001

Class ID: FURN

Type: New

Property Type: Personal

Account Group ID:

Physical Loc ID: GEORGE001

Asset Label: GEORGE001

Structure ID: 300

Custodian:

Manufacturer Name: Paul Buryan

Quantity: 1

Last Maintenance:

Date Added: 2/16/2007

Auto Add Book Info

by Asset ID

FA Facility Extra

OK

Facility ID: 300

Department ID: 00

Asset ID: 00001

Asset Transfers

Transfer assets between facilities quickly and seamlessly.

Transfer Maintenance

Transfer Clear Cancel

Asset ID: 00001 1 Office Desk - George

Transfer Date: 00000000 Transfer Event: 1

Quantity	Cost	Percent	Physical Location	Location ID
0	\$0.00	100.00%		
			300	
0	\$0.00	0.00%		

FA Uneditable Extra

OK

Transfer Maintenance

Facility ID: 300

Department ID: 00

Asset ID: 00001

by Asset ID

Multi-Facility Processing for Fixed Assets allows users with proper facility access to see fixed assets for any facility and run transactions for those fixed assets.

Fixed assets in the Multi-Facility environment are associated to one facility and can be transferred to a different facility as required.

Key Features

- Assets for a facility can only be seen by users who have access to that facility
- Account substitution "codes" standard Fixed Assets transactions – such as monthly depreciation, transfers, retirements (and related Mass functions) – to the proper facility GL accounts eliminating coding errors that are prevalent in multi-entity environments
- Group functions – such as Select Assets – only allows groups to be formed through assets that a user has facility access to

Multi-Facility Fixed Assets requires that the Microsoft Dynamics GP Fixed Assets module be previously installed.

Payroll Module

Multi-Facility Processing for Payroll allows organizations the flexibility of both centralized and decentralized payroll processing.

Multi-Facility Processing for Payroll allows only users with proper facility access to see employee records and run payroll for those employees.

Key Features

- An employee record is associated to one facility
- Master Tax Schedules / Benefits / Deductions are shared across facilities to eliminate data redundancy
- Separate Tax IDs can be associated to individual facilities
- Checks are run in facility then employee order
- Period End / W2 reporting by Facility

Multi-Facility Payroll requires that the Microsoft Dynamics GP US Payroll module be previously installed. Canadian payroll is not currently supported.

Security

Employee records can only be seen by and posted to by users with proper security access. An employee is associated to only one facility.

Employee ID	ACEK0001	Class ID	SUPP	<input type="checkbox"/> Inactive
Facility ID	300			
Last Name	Ackerman	Address ID	PRIMARY	
First	Simon	Address	987 Willow Ave	
Middle		City	Winnetka	
Soc Sec Number	917-23-9833	State	IL	
Hire Date	8/3/2003	ZIP Code	98272	County
Adjusted Hire Date	8/3/2003	Country	USA	
Last Day Worked		Phone 1	(312) 555-0115 Ext. 0000	
Date Inactivated	0/0/0000	Phone 2	(312) 555-0150 Ext. 0000	
Reason		Phone 3	(312) 555-0151 Ext. 0000	
SUTA State	IL	Department	SPTS	
Workers' Comp		Position	CSP	
Employment Type	Full Time Regular	Location		
		Supervisor		

Tax IDs

Payroll Tax IDs are associated to facilities for reporting and for use by different legal entities operating payrolls in a consolidated database.

Tax Code	AK
Description	Alaska
Facility ID	000
Tax ID Number	000-100-1
MMREF-1 Information	
Taxing Entity Code	
Other State Data	
State Control Number	

Purchase Order Processing Module

Purchase Order Entry

Each PO is "owned" or "stamped" with a facility. Different PO types allow you to differentiate between different purchases (ie. consumable vs. capital purchases). PO / Receipt auto-numbering allows for quick identification of documents. Integration with popular requisition software is available.

Line	Item	U of M	Quantity Ordered	Quantity Canceled	Unit Cost
1	128 SDRAM	Each	1		\$152.10
	128 meg SDRAM	WAREHOUSE	0		\$152.10
0			0.00		\$0.00
			0.00		\$0.00

Line	Item	U of M	Quantity Ordered	Quantity Canceled	Unit Cost
1	128 SDRAM	Each	1		\$152.10
	128 meg SDRAM	WAREHOUSE	0		\$152.10

Transaction Coding

Account substitution ensures that proper facility coding eliminates coding errors. Proper facility coding flows seamlessly from PO creation to accrual, to invoice and payment of invoice.

Purchasing in a multi-entity environment offers many challenges to organizations. Many organizations have centralized purchasing functions designed for large volume purchases that reduce per unit costs. At the same time, some decentralized purchasing at the facility level is needed to take care of purchases that need immediate attention.

Multi-Facility Processing for Purchase Order Processing (POP) allows organizations to accommodate both centralized and decentralized purchasing. Automatic PO numbers at each facility allows for greater control of purchasing. Automatic facility coding of POs eliminates transaction coding errors.

Key Features

- Automatic numbering of PO and receipt numbers by facility
- Account substitution codes POs and resulting accruals / invoices to the proper facility eliminating coding errors that are prevalent in multi-entity environments
- PO types allows you to differentiate between different types of purchases

Multi-Facility POP requires that the Microsoft Dynamics GP POP module be previously installed.

Project Accounting Module

Multi-Facility Processing for Project Accounting allows organizations the flexibility of utilizing Project Accounting data in a centralized or decentralized fashion depending on their needs.

Multi-Facility for Project Accounting allows users to have access to Projects according to their user-facility access rights.

Key Features

- Project Accounting projects can be accessed by users with the proper user-facility access. A project can only be "owned" by one facility.
- Cost Categories are facilitated the same way projects are, to only allow users with the proper user-facility rights to access and work with cost category information.
- Fee Maintenance, Equipment Maintenance, Miscellaneous Maintenance and Contract Maintenance are facilitated similarly, allowing users with the proper user-facility access to work with this information.
- Project Accounting transaction windows are facilitated – only transactions applying to the users' user-facility access are visible and can be edited.

Multi-Facility for Project Accounting requires that Microsoft Dynamics GP Project Accounting be previously installed.

Facilitize Projects

Projects can be associated to an individual facility in order to control user security and track project results to the relevant organizational structure.

The screenshot shows the 'Project Maintenance' window with the following fields and values:

Customer ID		Project No.		Status	Estimate
Contract Number		Project Name			
Project ID		Project Type	Time and Materials		
Project Class ID		Accounting Method	When Performed	Def Billing Type	STD
Project Mgr ID				Begin Date	0/0/0000
Business Mgr ID				End Date	0/0/0000
Estimator		Customer Contact			
Department		User Defined 1			
Purchase Order No.		User Defined 2			
Project Amount	\$0.00	Sub Acct Format	###-????-??		
On Account	\$0.00	SUTA State			
		Workers' Comp			
		Billing Currency ID			

Summary Table:

Cost To Date	Billings To Date	Receipts	Cost% Compl	Committed Cost	Profit
\$0.00	\$0.00	\$0.00		\$0.00	\$0.00

User Security

Projects can only be seen by and updated by users with proper security access. Any users without access to the facility ID will be blocked out of any projects associated with that facility.

The dialog box shows the following fields:

Project Number	
Facility ID	100
Allocation ID	

A History of Software Success

About Binary Stream

Since 1999, Binary Stream has been creating powerful software products for Microsoft Dynamics GP customers of all sizes. As an award winning provider of industry and enterprise solutions for Microsoft Dynamics GP, Binary Stream brings over 15 software products to GP users that enhance their systems and lower the total cost of owning Microsoft Dynamics GP. Having received Microsoft's highest honour of being named to their prestigious president's club in 2007, 2008 and 2009 Binary Stream is committed to our client success and is in the top 5% of partners for providing client and partner satisfaction.

Providing you a unique combination of Dynamics GP domain knowledge along with specific vertical expertise, Binary Stream delivers relevant and complete products for your needs.

- Over 800 customers use Binary Stream products worldwide
- More than 250 partners currently implement Binary Stream solutions
- Binary Stream has been ranked in the top 5% of Microsoft Partners for customer services and product excellence since 2007

With a passion for solving complex business problems Binary Stream provides software products that enable you to realize the full potential of your ERP system. Working through the Microsoft partner channel, we are committed to providing exceptional return on investment to our clients and continued business opportunity to our partners.

Product Integrations

Property Site Manager offers you a complete ERP package that is scalable to any business managing property. By meeting the needs of both residential and non-residential property managers, this solution can increase your average productivity by over 20 percent.

Materials Management for Healthcare offers Microsoft Dynamics GP users in healthcare complete supply chain management capabilities that allow for dramatic reduction of inventory related costs.

Investment Manager provides brokerages and fund owners with a fully integrated system to manage their investor activity, including batch processing of capital calls and investor distributions.

Advanced Revenue & Expense Deferrals provides Microsoft Dynamics GP users the ability to define revenue and expense recognition per line item. This depth gives you the control required to significantly increase revenue and expense recognition efficiency.

ISV Integrations

Multi-Facility Processing offers you several integrations with other third party software developers in the Microsoft Channel. To learn about these visit www.binarystream.com/mfp_integrations.asp

Looking for other **Microsoft Dynamics GP** Add-on Solutions?

Take a look at our other solutions:

- » **Investments & Loans Management**
- » **Property Site Management**
- » **Healthcare Materials Management**
- » **Advanced Revenue & Expense Deferrals**
- » **Advanced Recurring Contract Billing**
- » **Sales Document Consolidation Manager**
- » **eMailer Manager**
- » **National Accounts For Payables**
- » **Serial & Lot Number Manager**
- » **Vendor Contract Pricing & Rebates**

For more information about our products, services and partnership opportunities please visit our website at www.BinaryStream.com

